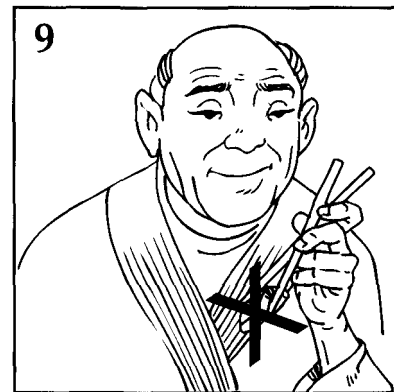
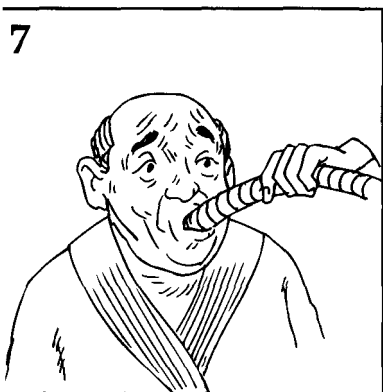
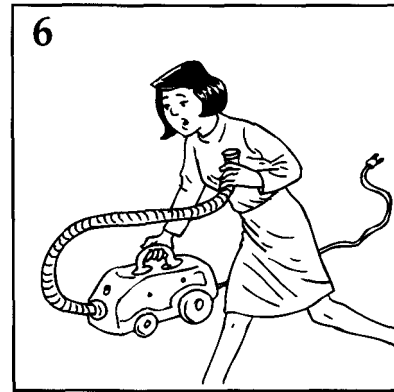
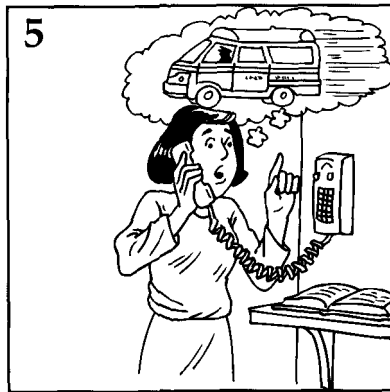
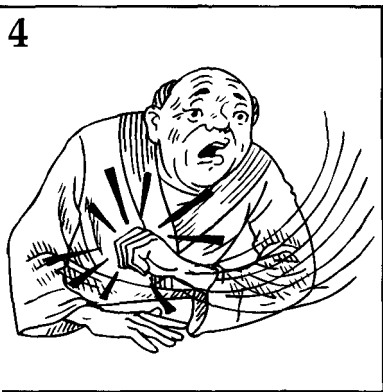
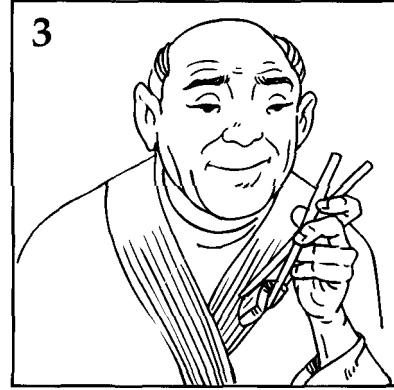
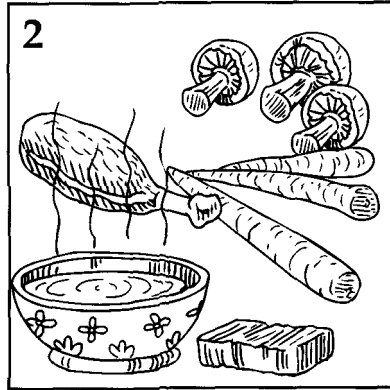


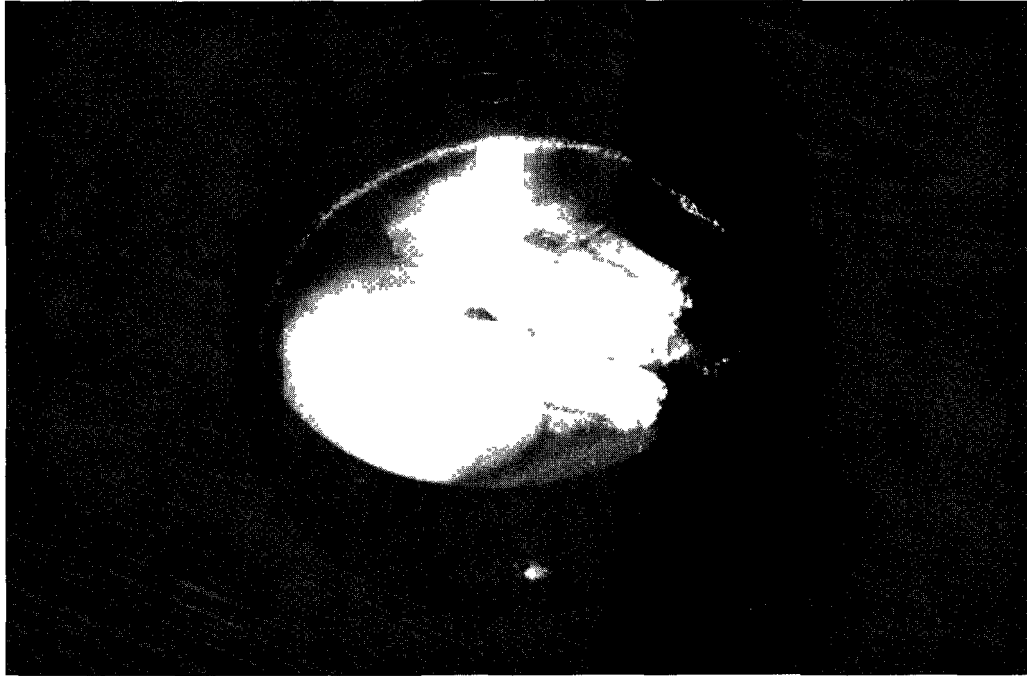
UNIT 5

1. PRE-READING

Look at the pictures. Listen to your teacher tell the story.



Grandfather Hada's Favorite Soup



It is New Year's Day in Japan. The Hada family is eating a special New Year's soup. The soup has chicken, vegetables, and mochi in it. Mochi are rice cakes.

Grandfather Hada likes mochi. He takes a big bite of mochi. Then he begins to cough.

Grandfather Hada coughs and coughs. He can't stop coughing. The mochi is stuck in his throat.

Grandfather Hada's face is purple. He can't breathe. Someone runs to the phone and calls an ambulance. When will the ambulance arrive? Maybe in five or ten minutes. That will be too late.

Grandfather Hada's daughter gets the vacuum cleaner. She turns the vacuum cleaner on and turns the power to "high." She puts the vacuum cleaner hose into Grandfather Hada's throat. Whoosh! The mochi comes out of his throat and goes into the vacuum cleaner. Now Grandfather Hada can breathe.

Nine minutes later, the ambulance arrives, and paramedics check Grandfather Hada. He is fine.

Next year, on New Year's Day, the Hada family will eat a special soup. The soup will have chicken and vegetables in it. But it will have no mochi!

2. VOCABULARY

Write the correct word on the line.

stuck
bite

check
throat

breathe

1. Grandfather Hada loves to eat mochi. So he doesn't put a little mochi into his mouth.
He opens his mouth and takes a big bite.
2. The mochi goes into Grandfather's mouth. Then it goes down into his
.....
3. The mochi is in Grandfather Hada's throat. It doesn't go up, and it doesn't go down.
It is
4. Grandfather Hada's face is purple because no air is going into his body. He can't
.....
5. The paramedics examine Grandfather Hada. They listen to his heart, and they listen
to his breathing. They to see if he is OK.

3. COMPREHENSION

REMEMBERING DETAILS

One word in each sentence is not correct. Find the word and cross it out. Write the correct word.

Japan

1. It is New Year's Day in ~~China~~.
2. The Hada family is eating a special New Year's cake.
3. The soup has fish, vegetables, and mochi in it.
4. Mochi are potato cakes.
5. Grandfather Hada loves to make mochi.
6. The mochi is stuck in Grandfather Hada's tooth.
7. Grandfather Hada's face is white.
8. Next year, the New Year's soup will have no vegetables in it.

MAKING CONNECTIONS

Complete the sentences. Write the letter of your answer on the line.

- | | |
|---|-------------------------------------|
| 1. Grandfather Hada takes a big bite of mochi
and <u>e</u> | a. turns the power to
"high." |
| 2. Someone runs to the phone and _____ | b. goes into the
vacuum cleaner. |
| 3. Grandfather Hada's daughter turns turns the vacuum
cleaner on and _____ | c. check Grandfather
Hada. |
| 4. The mochi comes out of Grandfather Hada's
throat and _____ | d. calls an ambulance. |
| 5. Paramedics arrive and _____ | e. begins to cough. |

4. DISCUSSION

Talk about your favorite foods. First, answer the questions. Write your answer on the line.

What do you like to eat? _____
(For example: I like to eat pizza.)

When do you like to eat it? _____
(For example: I like to eat it late at night.)

Tell your teacher your answers. Your teacher will make a list on the board. For example:

Who	What	When
Aldo	pizza	late at night
* Adriana	ice cream	in the summer

Walk around the room. Tell your classmates about your favorite food and when you like to eat it.

5. WRITING

Make five sentences with the information on the board. For example:

- Aldo likes to eat pizza, and he eats it late at night.*
- Adriana likes to eat ice cream, but she eats it only in the summer.*

Now write your sentences on your own paper.